

Paper Reference(s) 1SC0/2BF
Pearson Edexcel Level 1/Level 2
GCSE (9–1)

Combined Science
PAPER 4
Foundation Tier

Diagram Booklet

In the boxes below, write your name, centre number and candidate number.

Surname					
Other names					
Centre Number					
Candidate Number					

INSTRUCTIONS

There may be spare copies of some diagrams in case you need them.

**THIS DIAGRAM BOOKLET MUST BE
RETURNED WITH THE QUESTION PAPER
AT THE END OF THE EXAMINATION.**

Contents

Page

4 Question 1(a)

5 Question 2(a)(i)

6 Question 2(a)(i) (Spare copy)

7 Question 2(a)(ii)

8 Question 3(a)

9 Question 3(b)

10 Question 3(c)

11 Question 4(a)

12 Question 4(a)(ii)

13 Question 5(a)

14 Question 5(b)

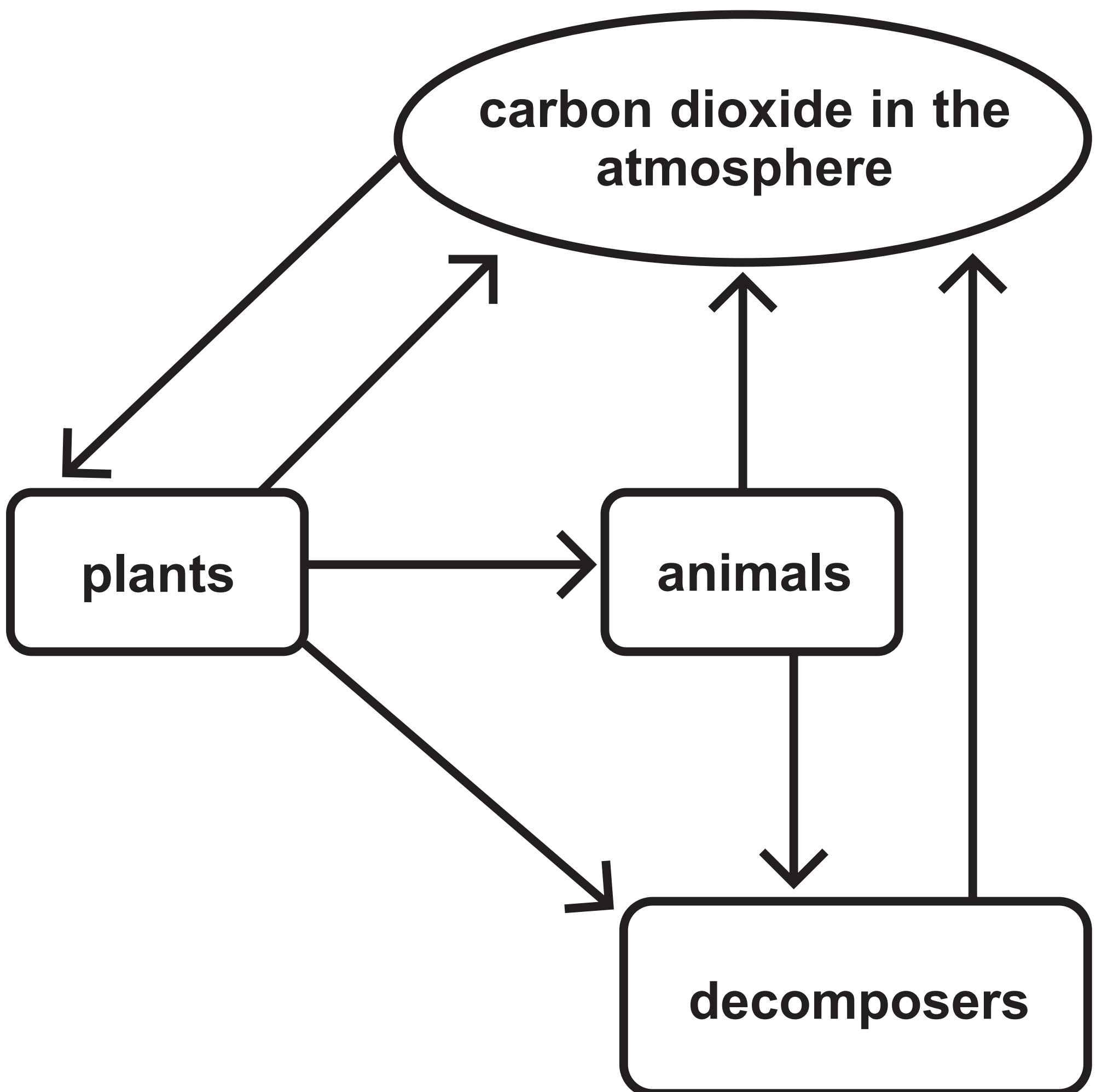
15 Question 5(c)

16 Question 6(a)

17 Question 6(c)

Question 1(a)

Figure 1



Question 2(a)(i)

part of the blood

plasma

red blood cell

function

• produces oestrogen

• transports dissolved urea

• contains haemoglobin

• produces antibodies

• surrounds and digests foreign cells

Question 2(a)(i)

part of the blood

plasma

red blood cell

function

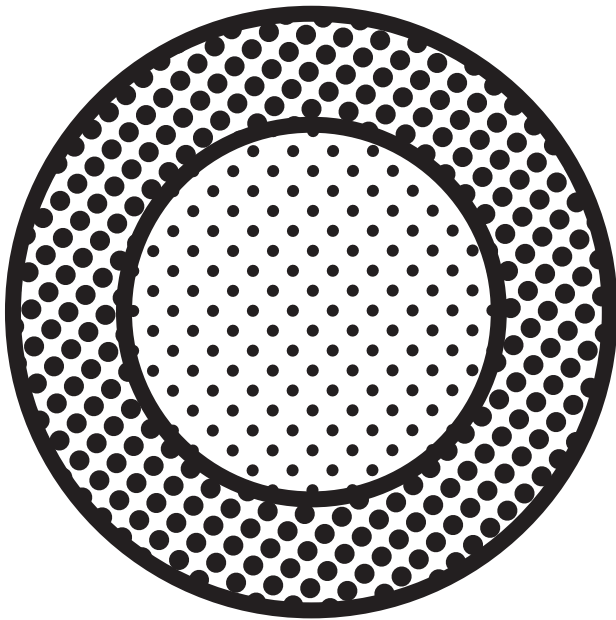
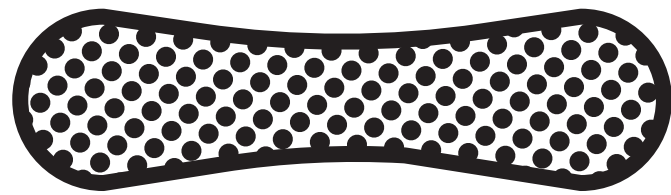
• produces oestrogen

• transports dissolved urea

• contains haemoglobin

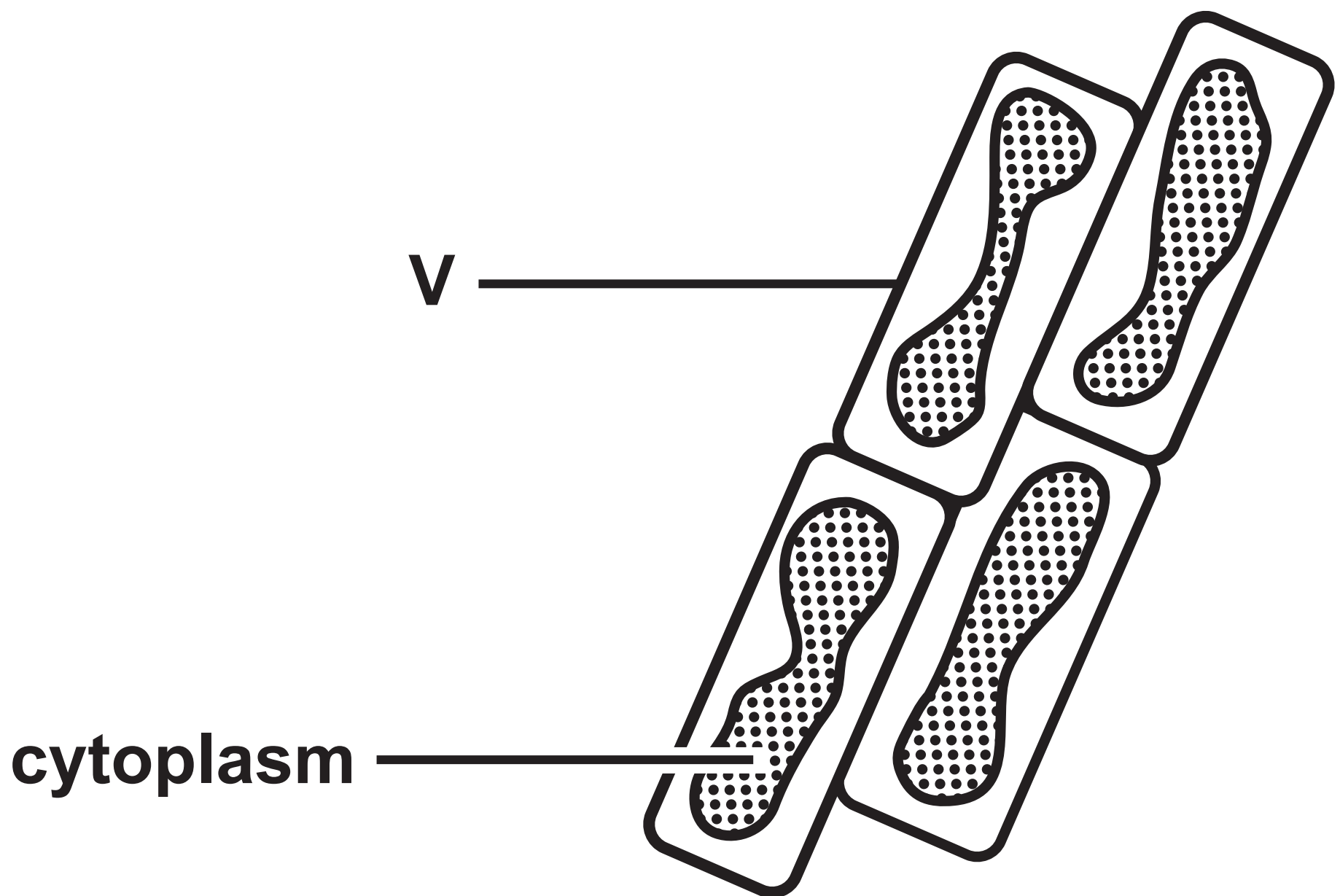
• produces antibodies

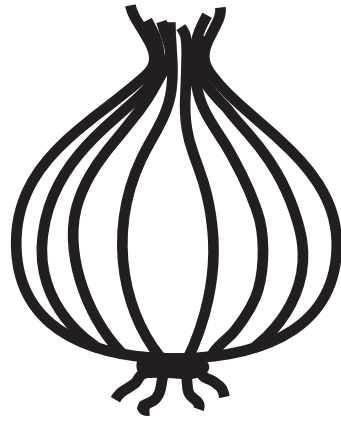
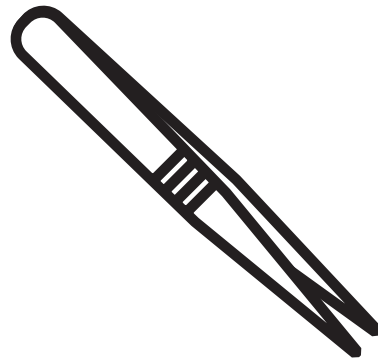
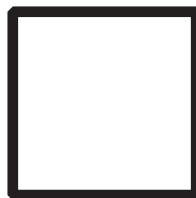
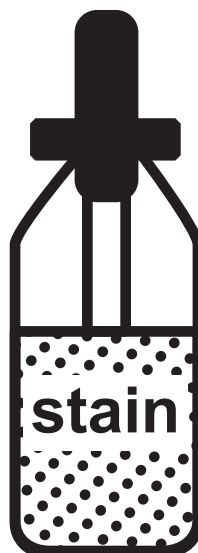
• surrounds and digests foreign cells

Question 2(a)(ii)**Figure 2****plan view****side view**

Question 3(a)

Figure 3

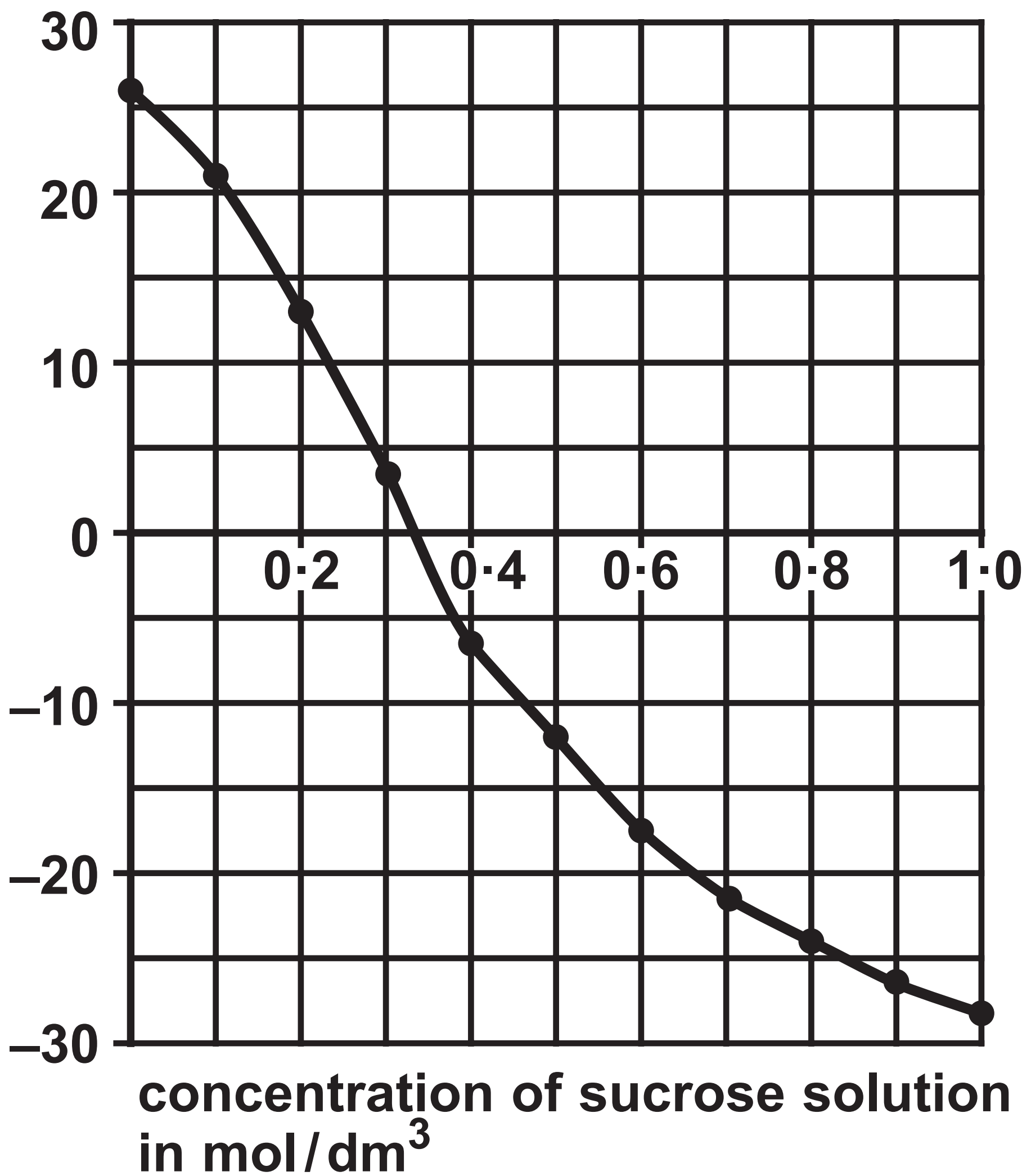


Question 3(b)**Figure 4****onion****tweezers****cover slip****bottle of stain****microscope
slide**

Question 3(c)

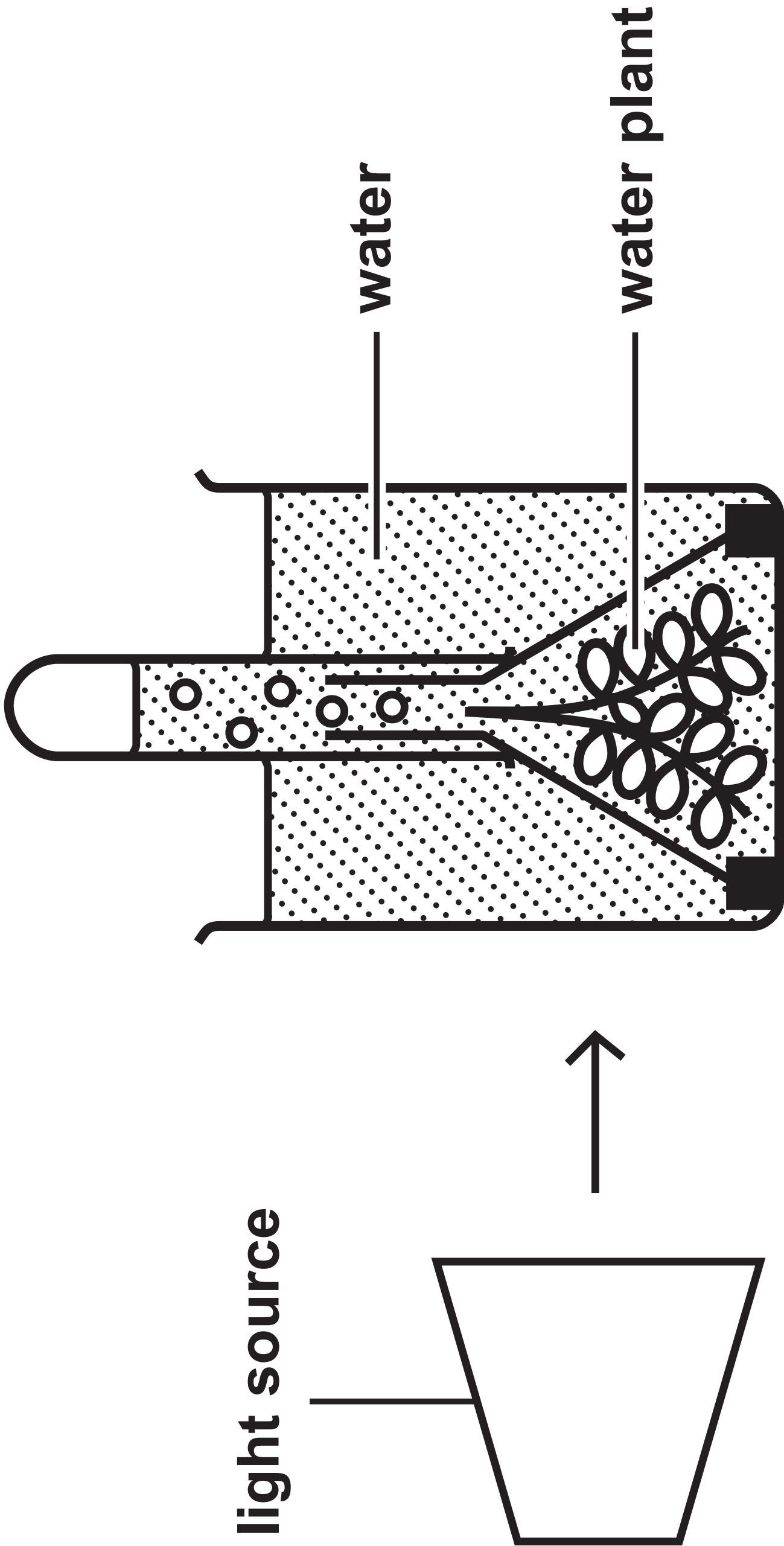
Figure 5

percentage
change in mass



Question 4(a)

Figure 6



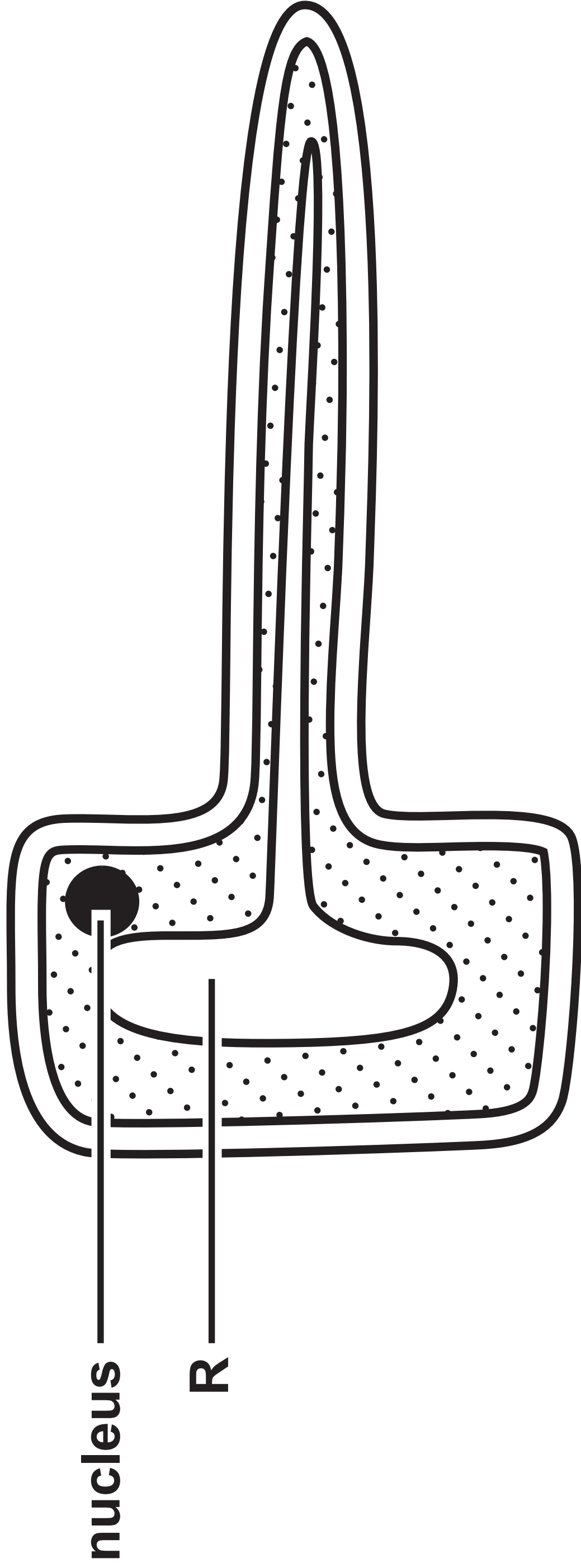
Question 4(a)(ii)

Figure 7

light intensity in arbitrary units	rate of photosynthesis in bubbles per minute
25	19
31	43
39	46
50	95
69	125
100	222

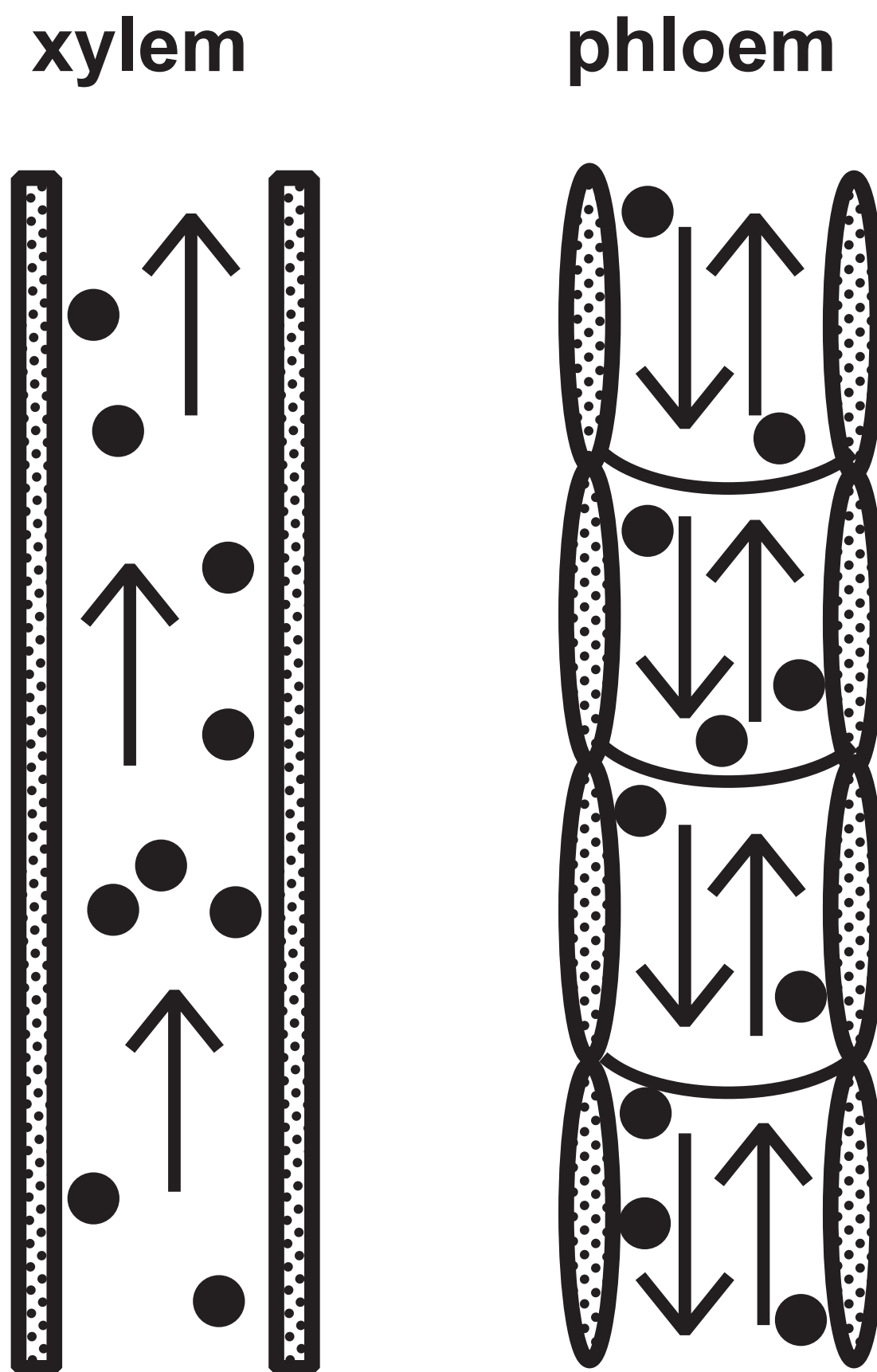
Question 5(a)

Figure 8



Question 5(b)

Figure 9

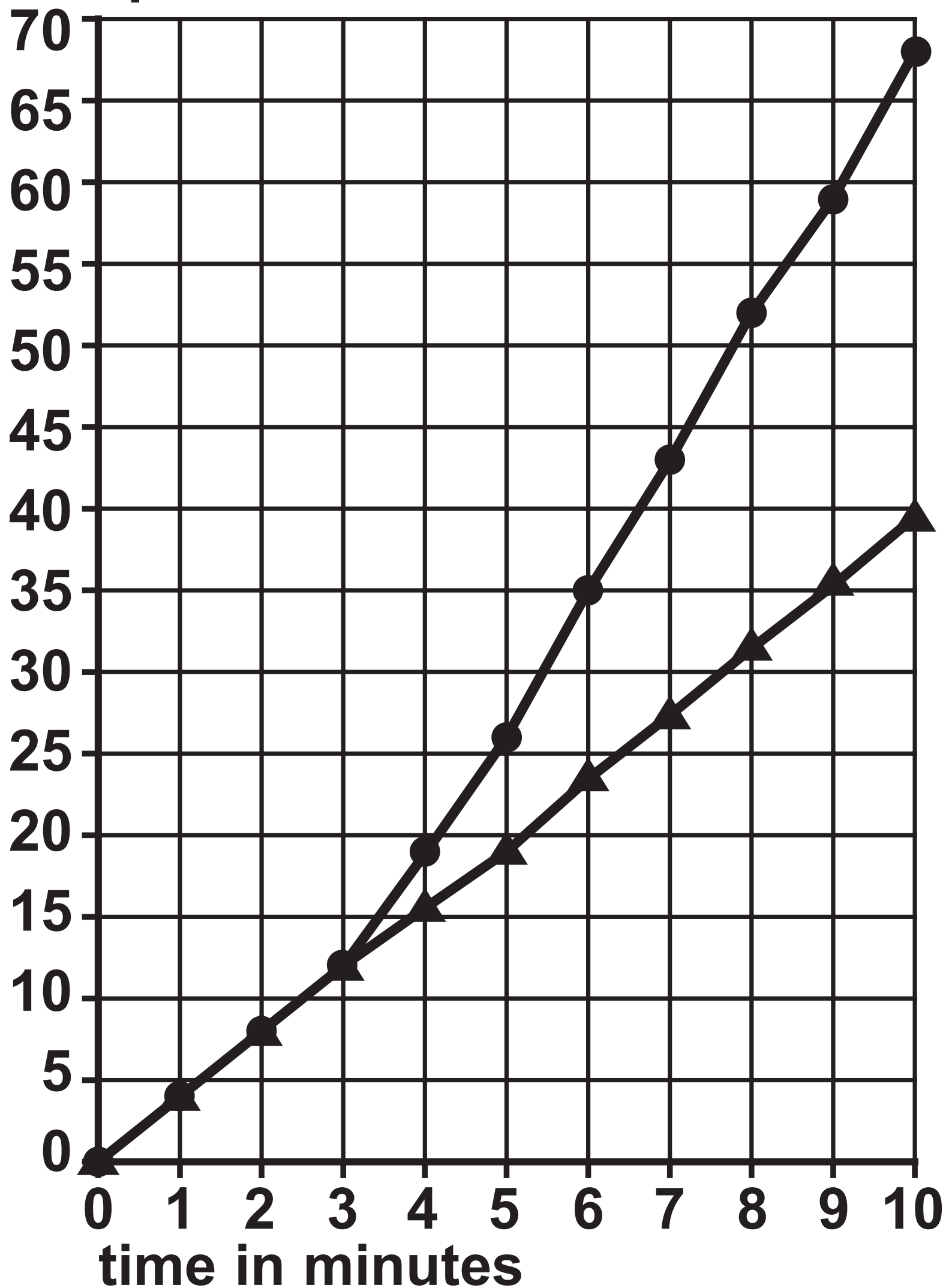


Question 5(c)

Figure 10

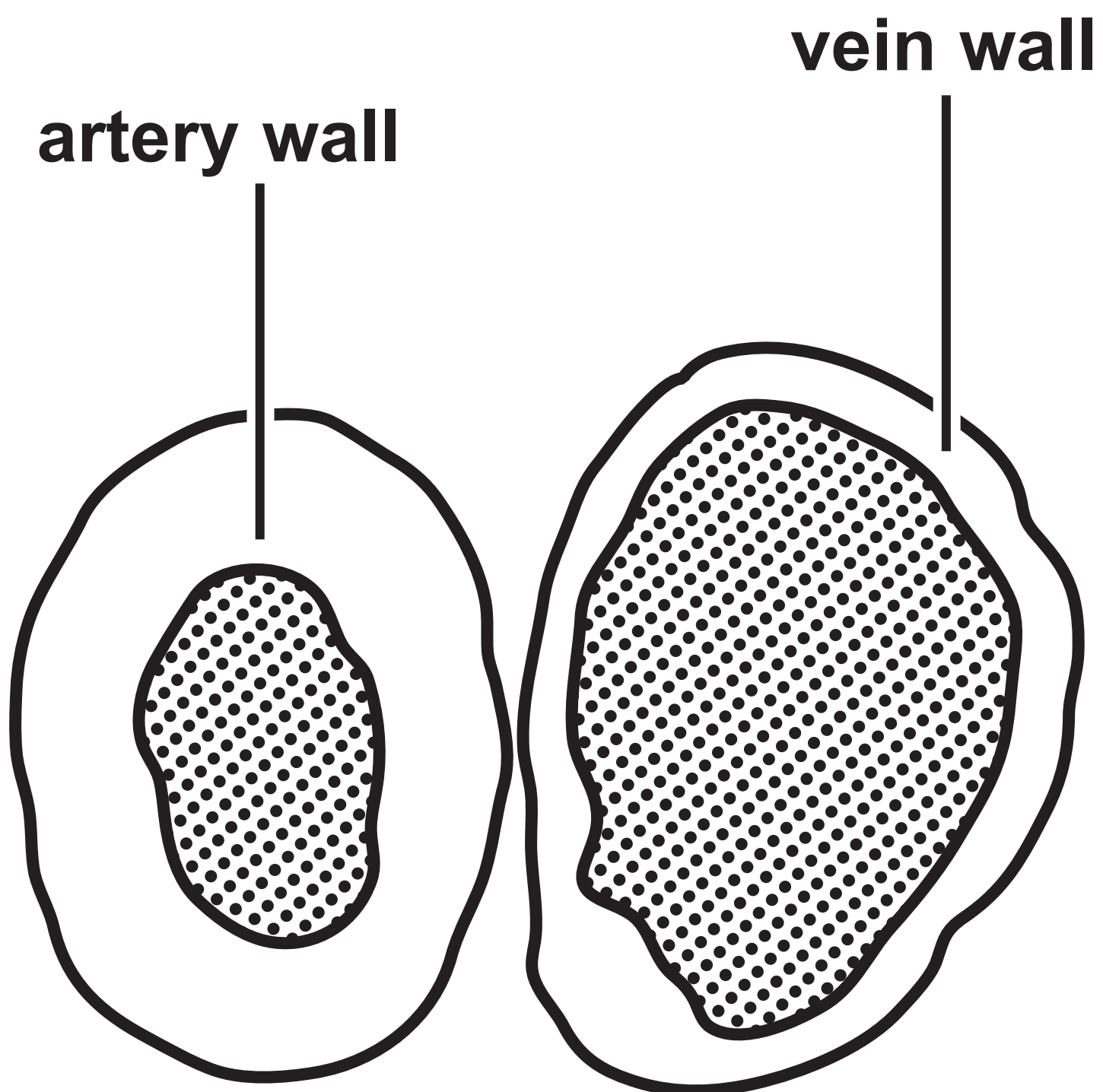
—●— fan switched on after three minutes

—▲— fan not switched on
volume of water taken up
by the plant in mm^3



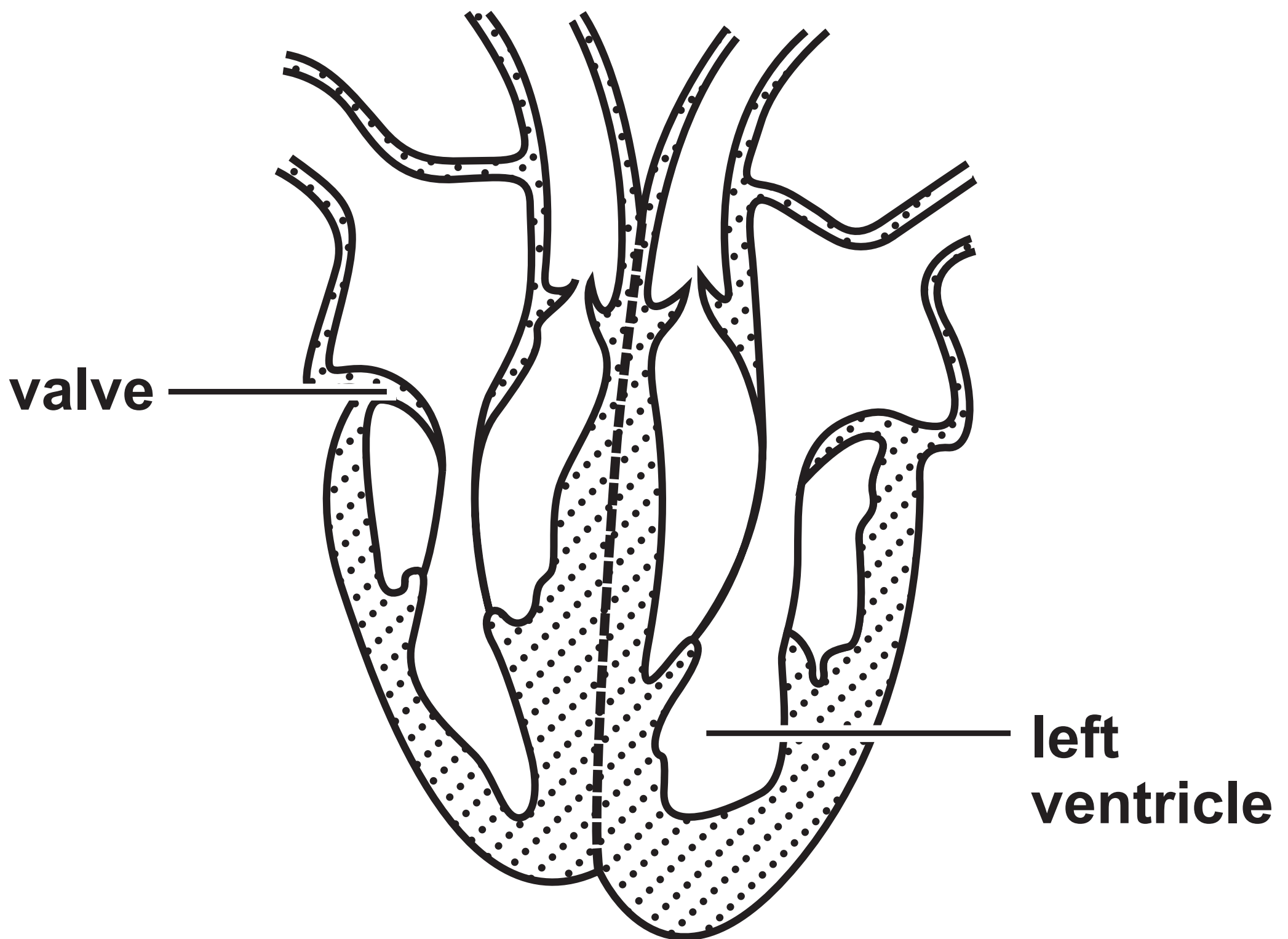
Question 6(a)

Figure 11



Question 6(c)

Figure 12



Question 2(a)(ii)
(Source adapted from:
© SciePro/Shutterstock)

Question 3(a)
(Source adapted from:
© Rattiya Thongdumhyu/Shutterstock)

Question 4(a)
(Source adapted from:
© ghrzuzudu/Shutterstock)

Question 6(a)
(Source adapted from:
© The University of Kansas Medical Center)